



WHIRL-PAK®

Filtration Group



BLACK BAGS

3 SIZES
AVAILABLE



+1

POST-MANUFACTURING STERILIZATION

- increased sample integrity
- perforated closure to maintain sterility



TRUSTED, PUNCTURE- PROOF CLOSURE TABS

- tape extends beyond wire to eliminate sharp ends and provide a sturdy grip
- wire tabs hold the top open for easy access to add to or remove sample
- worry-free, no-leak closure for sample integrity



OPAQUE POLYETHYLENE FILM

- maximum protection for samples that are sensitive to light
- FDA approved for food contact
- ideal for pharmaceuticals, supplements, and many other liquid and solid samples.



OPENING PULL TABS

- for easy opening
- non-slip textured Tyvek®



CONVENIENT WRITE-ON STRIP

- makes labeling quick and easy
- clear sample identification
- for organization & traceability



CONTINUOUS PERIMETER SEAL

- maximum protection against leaks

maximum protection for photosensitive samples



smarter sustainability

LESS STORAGE SPACE • EASY TO SHIP • USER FRIENDLY • COST EFFECTIVE



+ ideal for use in
food & bev, cannabis, pharmaceuticals and more.

Whirl-Pak® sterilized sampling bags are R-Nase, D-Nase, Pyrogen and BPH free and comply with regulatory and industrial requirements:





500 BAGS VS. 500 BOTTLES

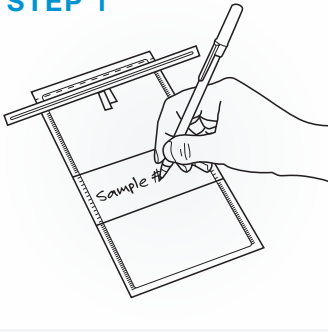
GUARANTEED STERILE
Manufactured according to
quality management systems
ISO9001:2015

- o Uses less shelf space
- o Easier disposal
- o Durable
- o Lower shipping costs
- o Built-in closure
- o Lower total cost



SOLIDS OR LIQUIDS - LEAK-PROOF CLOSURE

STEP 1



- o Label your sample if using a write-on bag.

STEP 2



- o To open, tear off the top along the perforation.

STEP 3



- o Use the Tyvek® pull tabs to open without contamination.

STEP 4



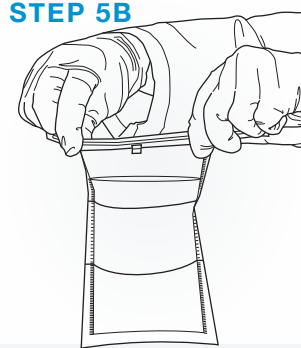
- o Place sample in bag. Perfect for liquids or solids.

STEP 5A



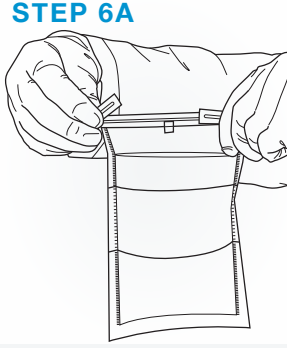
- o Hold bag by the tabs and whirl 3 to 4 times to create a seal.

STEP 5B



- o Or, fold the tab over tightly 3 to 4 times to close.

STEP 6A



- o Secure closure, bend wire ends for solids.

STEP 6B



- o Or, bring the two wire ends together to twist, tie and tuck!

TO LEARN MORE **CONTACT**



WHIRL-PAK®
Filtration Group



whirl-pak.com



+1.920.568.5616



contact@whirl-pak.com